

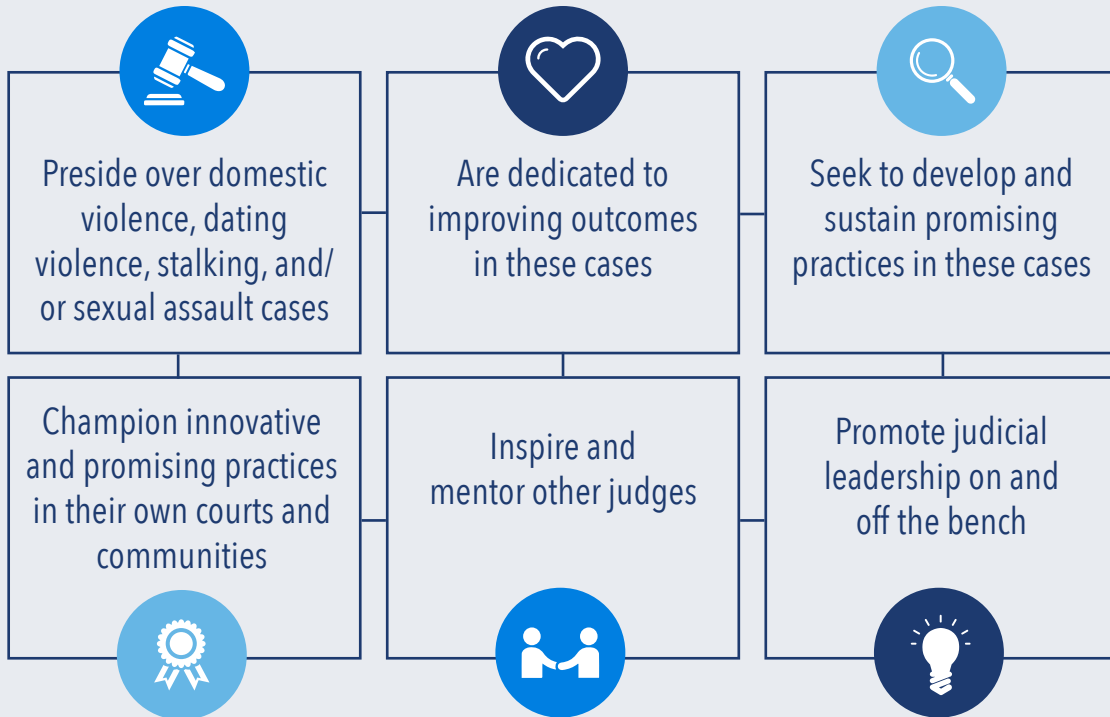


JUDICIAL ENGAGEMENT NETWORK

Strong Families | Safer Communities

A NETWORK **FOR** JUDGES, **BY** JUDGES.

Calling all judges who share a vision for safe and healthy families and who:



If this is your calling, join the Judicial Engagement Network (JEN)!

Visit www.JudicialEngagementNetwork.org for more information.

NETWORK BENEFITS:

- A dedicated website for JEN judges to connect and interact with and provide peer support to each other and to access cutting-edge resources on innovative practices and judicial leadership in domestic violence, dating violence, sexual assault, and stalking cases;
- Virtual discussion forums on topics of interest to JEN judges;
- In-person education and e-learning opportunities to support JEN judges with effectively and ethically exercising judicial leadership on and off the bench;
- A Fellowship program that facilitates the development of innovative practices and judicial leadership;
- Peer mentorship opportunities to support the next generation of judicial leaders; and
- A JEN directory that allows network judges to search for and connect with peers based upon topical interests and case types.

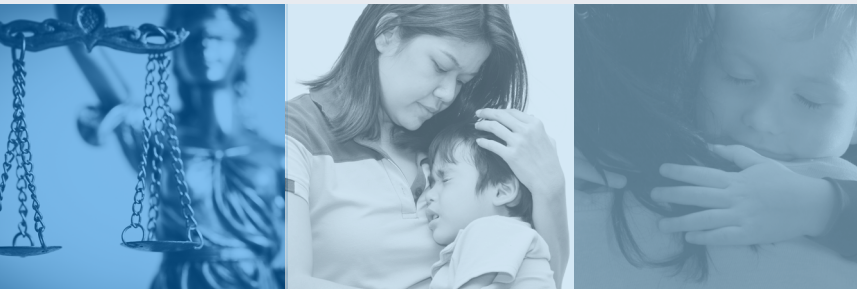


JUDICIAL ENGAGEMENT NETWORK

Strong Families | Safer Communities

PURPOSE STATEMENT

The Judicial Engagement Network (JEN) will identify, connect, and bring together all judges on a regular basis to promote cutting edge best practices, increase access to justice, provide resources for continuing judicial education, and encourage collaboration among all judges in order to improve responses to **domestic violence, teen dating violence, sexual assault, and stalking.**



A PARTNERSHIP OF



WHERE IT ALL BEGAN...

In 2016, the Judicial Engagement Network (JEN), a network for judges, by judges, was launched by the National Council of Juvenile and Family Court Judges (NCJFCJ) and the Center for Court Innovation (CCI), with the support of the U.S. Department of Justice, Office on Violence Against Women (OVW), to facilitate and encourage judicial excellence in domestic violence, dating violence, sexual assault, and stalking cases.

The JEN identifies, connects, and brings together judges to promote cutting edge judicial practices that result in better outcomes in and for these cases and families; provides opportunities for judges to create and hone their leadership skills to effect change in their communities; and supports the sharing and passing of knowledge and expertise to the next generation of judges.

The JEN was founded on the premise that courts hold a unique position in protecting social values, which places judges and judicial officers in an important position to lead social justice changes in their own courts and communities.

For more information or to join the Judicial Engagement Network (JEN) visit
www.JudicialEngagementNetwork.org